

Land Acknowledgement

As an organization that transcends geographic and national boundaries, Local Contexts acknowledges that all of the lands and waters we occupy are Indigenous Homelands. We recognize the ongoing significance of these lands and waters for Indigenous Peoples of the past, present, and future.

Local Contexts is committed to Indigenous sovereignty and ethical data governance; we believe that naming and addressing the violence of settler-colonialism and its ongoing effects is central to the work that we do. In our efforts to overcome the legacies of settler-colonialism, Local Contexts was developed to create effective and recognized pathways for implementing and maintaining Indigenous data rights and facilitate ethical relationships and enable collaboration with stewards of Indigenous collections.

We ask you to acknowledge these truths and join us in our commitment to acting as respectful guests within the Homelands in which we live and work.

Whāia te iti kahurangi, ki te tuohu koe, me he maunga teitei

Seek the treasure that you value most dearly, if you bow your head, let it be to a lofty mountain.

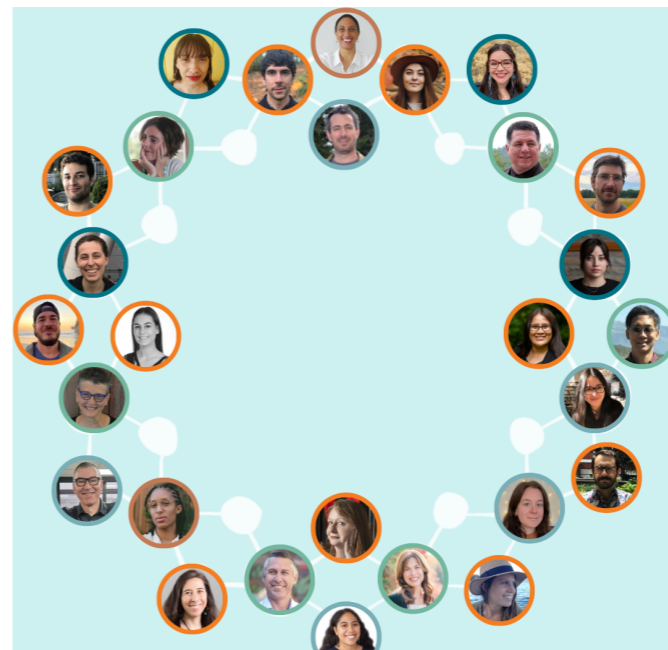
Whakataukī

(Proverb)

This whakataukī refers to the importance of setting goals and pursuing your destiny. The whakataukī speaks of perseverance and endurance, refusing to let obstacles get in your way while striving to reach your goals.

Welcome Message

Kia ora! Welcome! We are thrilled to officially launch the Local Contexts Newsletter. Here you will find a collection of the tools and support Local Contexts has to offer. With each Newsletter, you can expect an update on some of the real-life applications of the Labels and Notices, news, upcoming events, and much more. New issues of the Newsletter will be released seasonally, aligning with the ebbs and flows of our natural world and relations around the world.



Local Contexts Summit 2023



Local Contexts Summit 2023

May 10
10 am-4 pm EDT

Center for Art, Research and Alliances (CARA)
225 W 13th, Lenapehoking (New York City)
and online

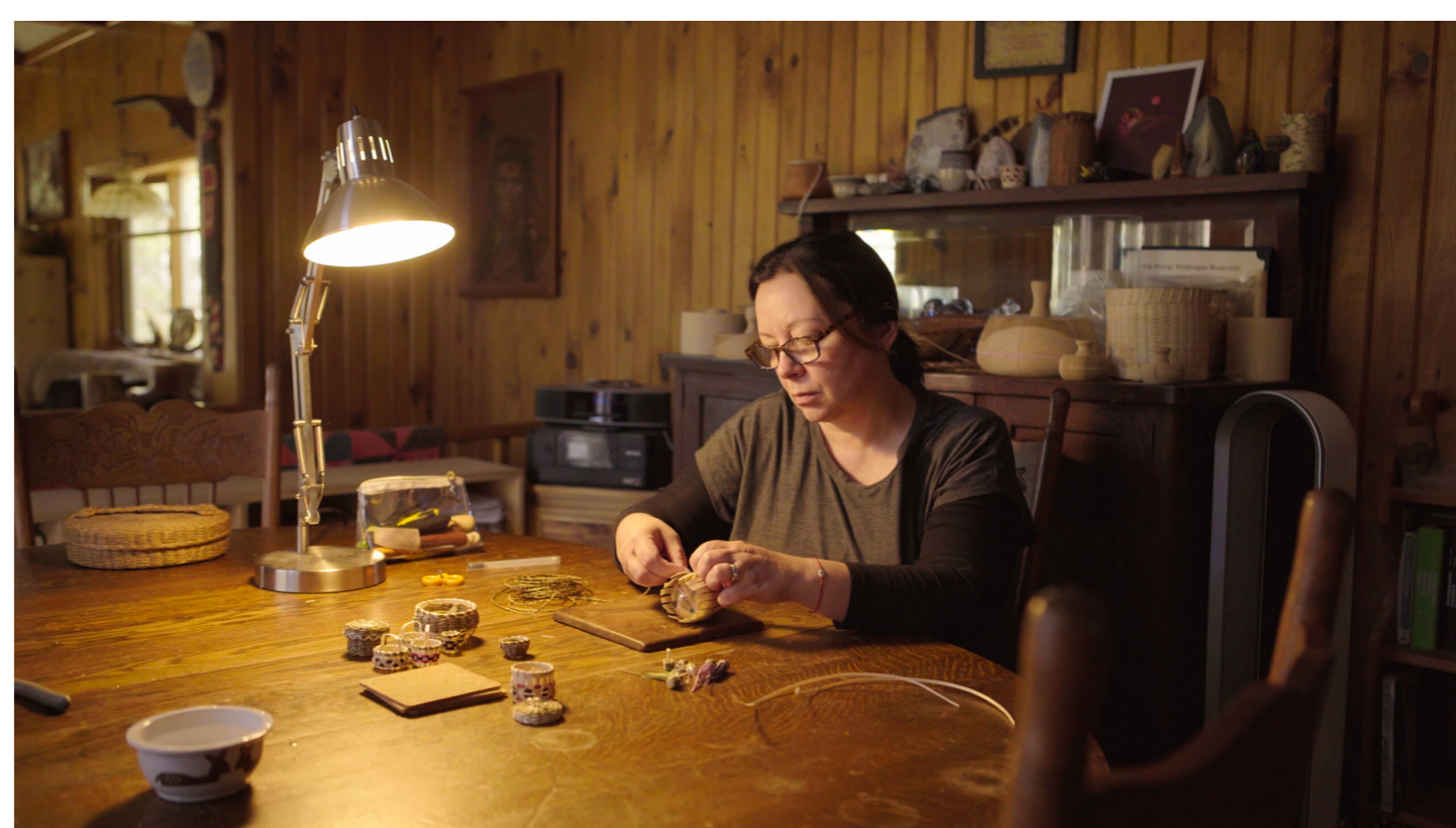
Indigenous authority, control, & governance over Indigenous knowledges & data in the humanities & the sciences

The first Local Contexts Summit will be held on May 10! The Summit will bring together people from across the Local Contexts community focusing on Indigenous authority, control, and governance over Indigenous knowledges and data in the humanities and the sciences. Following the Summit will be the premiere of "Awasəwehlawəlatina wikəwamok – They Returned Home," a film by the Penobscot Nation and Local Contexts.

The Summit will take place at [Center for Art, Research and Alliances \(CARA\)](#) in Lenapehoking (New York City), and be streamed online. Registration is required to attend in-person. We hope that you can join this exciting event and to continue building the international Local Contexts community.

[Learn More](#)

Awasəwehlawəlatina wikəwamok - They Returned Home

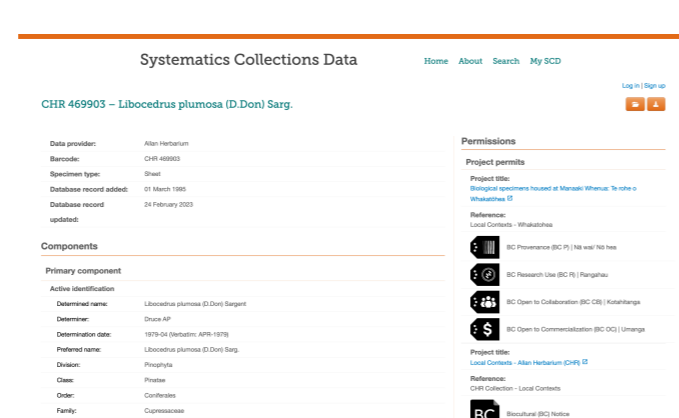


Following the Summit we will host the premiere of "Awasəwehlawəlatina wikəwamok – They Returned Home." This film by the Penobscot Nation and Local Contexts charts the groundbreaking work undertaken by the Penobscot Nation to reposition Penobscot cultural authority within institutions in Maine and beyond. Following the screening, there will be a discussion with Jennifer Neptune (Penobscot), James Eric Francis, Sr. (Penobscot), Darren Ranco (Penobscot), and filmmakers Andreas Burgess and Jane Anderson.

Registration is required to attend.

[Register Here](#)

Labels & Notices



Biocultural Labels and Notices, Manaaki Whenua

The first Biocultural Labels and Notices have been applied to an open biodiversity database using the Local Contexts Hub.

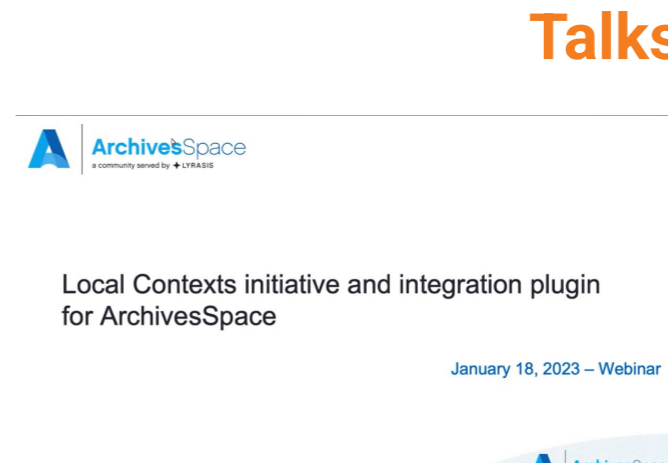
Manaaki Whenua is a research institute in Aotearoa New Zealand. Information about the collections housed at Manaaki Whenua can be found on its Systematics Collections Data website.

So far, Te Whakatōhea, Ngāti Maru (Taranaki), and Te Roroa have added BC Labels to a total of over 6,000 records. Manaaki Whenua has added BC Notices to every record in its collections database - over 675,000 specimens!

[Learn More](#)

ArchivesSpace Plugin

In this webinar, Co-Directors Jane Anderson and Maui Hudson gave an introduction to the Local Contexts initiative and Local Contexts Hub, and ArchivesSpace community member Joshua Shaw demonstrated the Local Contexts Hub integration plugin he developed to integrate Local Contexts Labels and Notices with ArchivesSpace.



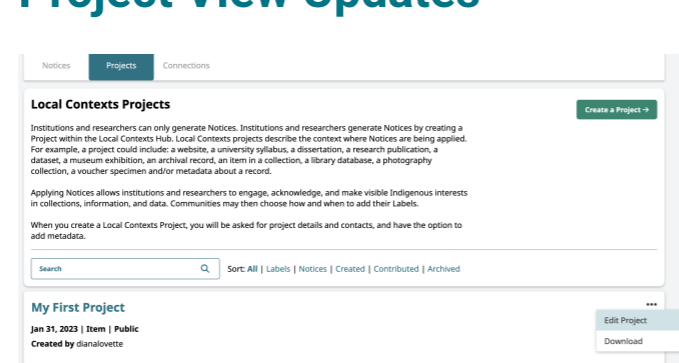
[Learn More](#)

Talks

Hub Updates

The Local Contexts Hub is a web portal that allows Indigenous communities to customize the Local Contexts Traditional Knowledge and Biocultural Labels, and institutions and researchers to generate Local Contexts Notices. The Hub received a major update in February.

Project View Updates



Highlights from this update include:

Simplified Projects list

List of Projects simplified, Project actions moved to the Project view, and quick actions for each Project from a new drop-down menu.

Updated Project view

The Project view has a new appearance, actions, and record of Project activity.

[Learn More](#)

Upcoming

April 2023

April 12 | Centre for Indigenous and Settler Colonial Studies, University of Kent: [Indigenous Knowledge in Digital Spaces](#)

April 14 | New Mexico Indigenous Spring Symposium: [Local Contexts: Supporting Indigenous Data Sovereignty in Data Collections and Data](#)

April 17 | ENRICH Webinar Series: [3D Replicas and Data Ownership](#)

April 25 | ENRICH Technical Implementation Working Group Meeting

April 25 | IEEE: [Consultation with Indigenous Peoples on the IEEE P2890 Recommended Practice for the Provenance of Indigenous Peoples' Data](#)

April 26 | Icahn School of Medicine at Mount Sinai: [ENRICH Panel](#)

April 27 | ENRICH Cultural Institution Working Group Meeting

May 2023

May 9 | ENRICH, Collaboratory for Indigenous Data Governance, and Tikanga in Technology: [Indigenous Metadata Symposium](#)

May 10 | Local Contexts Summit

May 23 | ENRICH Indigenous Community Network Meeting

June 2023

June 22 | ENRICH Webinar Series: [International IP Discussions Affecting Tribal Nations \(Part I\)](#)

June 28 | IEEE: [Consultation with Indigenous Peoples on the IEEE P2890 Recommended Practice for the Provenance of Indigenous Peoples' Data](#)

[View More](#)

[Contribute to the newsletter](#)

Have you implemented Labels or Notices into your work? Are you leading an event centered on Indigenous Intellectual Property and/or Indigenous Data Sovereignty? Do you have something else you would like to share in the Local Contexts newsletter? We would love to hear from you!